



A Rare Opportunity!

Artwork Specifications:

- 16 feet tall & 6 foot diameter
- constructed of steel, glass, fiberglass and styrofoam
- weather resistant - suitable for interior or exterior placement
- can be installed with or without concrete decorative planter ; specifications attached

To discuss shipping options and installation options please call 973.222.6937 or email at studio@anneoshman.com

Nature's Berth

This glass mosaic sculpture by NJ Artist Anne Oshman is available for purchase. Oshman's works are often commissions making this a rare opportunity to purchase a finished piece. Currently part of an exhibition at the Port of San Diego as part of their URBAN TREES 7 project, the sculpture entitled Nature's Berth will be available for installation mid-November.

Oshman's inspirations often come from nature. Her large scale 3D mosaic sculpture takes the form of a flower, with ants parading up it's stem towards the large colorful bloom supporting a delicate blue butterfly. Oshman's work lends itself beautifully to outdoor installation because of it's playful, evocative and highly decorative nature.

About the Artist:

Anne Oshman began her artistic career years ago creating functional art pieces for sale through furniture retailers, boutiques, and galleries. A life-long gardener she has always been creative. But it was in the fortuitous discovery of a NY Studio run by European trained mosaicists, that led Oshman to discover her passion, the art of mosaic. Oshman is a member of SAMA (Society of American Mosaic Artists), NAWA (National Association of Women Artists), and the Guild. She has studied mosaic arts at the Unicorn Art Studio in New York City as well as having a MA from Hunter College. To see photos of the work in progress please visit <http://www.anneoshman.com>





FRONT VIEW



SIDE VIEW

FRONT ELEVATION			
Wind Analysis	Projected Area (SF)	Height (FT)	OT Moment (Ft-Lbs)
Ground to 1'-0"	4	0.5	39.8
1'-0" to 2'-0"	4	1.5	119.4
2'-0" to 3'-0"	4	2.5	199
3'-0" to 4'-0"	0.5	3.5	34.825
4'-0" to 5'-0"	0.5	4.5	44.775
5'-0" to 6'-0"	0.5	5.5	54.725
6'-0" to 7'-0"	0.5	6.5	64.675
7'-0" to 8'-0"	0.5	7.5	74.625
8'-0" to 9'-0"	0.5	8.5	84.575
9'-0" to 10'-0"	0.5	9.5	94.525
10'-0" to 11'-0"	3.3	10.5	689.535
11'-0" to 12'-0"	5.3	11.5	1212.905
12'-0" to 13'-0"	5.3	12.5	1318.375
13'-0" to 14'-0"	5.2	13.5	1396.98
14'-0" to 15'-0"	5.3	14.5	1529.315
15'-0" to 16'-0"	1.6	15.5	493.52
16'-0" to 17'-0"		16.5	0
17'-0" to 18'-0"		17.5	0
18'-0" to 19'-0"		18.5	0
19'-0" to 20'-0"		19.5	0
Total OT Moment			7451.555
Allow OT Moment			7000
Size Factor			1.06450786

This artwork does not exceed wind-loading specifications as presently designed.



URBAN TREES

PRECAST CONCRETE PLANTER SPECIFICATIONS

GENERAL

Precast concrete planters shall be provided in accordance with these specifications and the attached drawing "DETAIL 1 – POST AND PRECAST CONCRETE PLANTER BASE FOR URBAN TREES". The weight of each precast concrete planter shall be 5,000 pounds or greater. Manufacturer shall provide lifting attachment points for transport and installation of each planter. Embedded PVC pipe sleeve cast into each planter shall be held firmly in place during manufacturing to ensure it is positioned vertically and located at center of the planter. Each precast concrete planters shall be delivered on a pallet to enable forklift to unload from truck.

PRECAST CONCRETE MANUFACTURER

Precast concrete planters shall be furnished by a firm having a minimum of five-years of successful experience in the design and manufacturing of precast concrete planters of similar size (or greater) for exterior use in salt-air environments.

PRECAST CONCRETE

Precast concrete shall be cast monolithically and shall be reinforced:

1. Cement shall be Portland cement conforming to ASTM C-150, Types I, II, and III.
2. Integral color shall be pure mineral oxide, lime proof and non-fading.
3. Aggregates for concrete shall conform to ASTM C-33 with a maximum size of ¾-inch.
4. Precast concrete shall be reinforced. Reinforcing steel shall conform to ASTM A615 and shall be epoxy-coated. Minimum concrete cover for reinforcement shall be 2-inches. Reinforcement provided by manufacturer shall provide adequate strength and control of concrete cracking. As a minimum, reinforcing shall be as shown on the drawing referenced above.
5. Concrete shall have a minimum strength of 5,000 psi at 28 days, as determined by tests of 6-inch round by 12-inch long cylinders.
6. Precast concrete shall contain concrete of white and/or gray cements along with carefully selected aggregates of various sizes to provide a product resembling natural cut stone.
7. Precast concrete planter shall be manufactured with no surface imperfections or voids.
8. Precast concrete planter shall include four (4) drain holes as shown in drawings that are ¾-inch diameter.

STYLE, COLOR AND SURFACE FINISH

The Port of San Diego shall make the selection of color and surface finish for the precast concrete planters after discussion with manufacturer and just prior to ordering. Colors shall be selected from manufacturer's colors or from pigment or admixture manufacturers' charts. Surface finish of the planters shall be selected from a range of surface finish options including light to heavy sandblast, and exposed aggregate. The style of the precast concrete planter shall be similar to Dura Art Stone product named "Mendocino" square planter, pg. 10 of product catalog named Perimeter Security.

SEALER

Precast concrete planters shall be sealed on all surfaces, except bottom, with anti-graffiti sealer. The sealer shall meet the moisture retention requirements of ASTM C309 when tested in accordance with ASTM C156.

WARRANTY

Manufacturer shall warrant the precast concrete planter to be free of defects in materials under normal use and service for one year from the date of purchase. All defects shall be repaired or replaced by manufacturer.

TECHNICAL SUPPORT

Manufacturer shall submit shop drawings of precast concrete planters to the Port of San Diego for approval prior to production.



DURA ART STONE

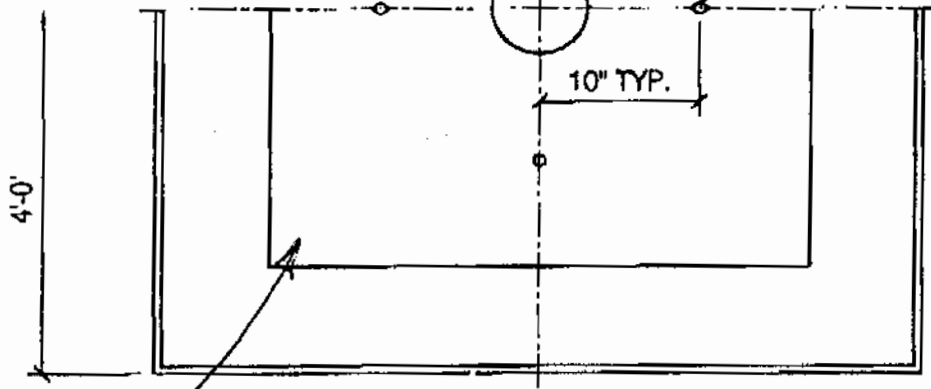
SOUTHERN CALIFORNIA

11010 Live Oak
Fontana, CA 92337
(909) 350-9000
Fax (909) 350-9632

TO: DENNIS JOHNSON

6" PVC C-900 PIPESLEEVE
w/6 1/8" I.D.

4 - 3/4" Ø DRAIN HOLE



PLAN VIEW

FOR APPROVAL ONLY

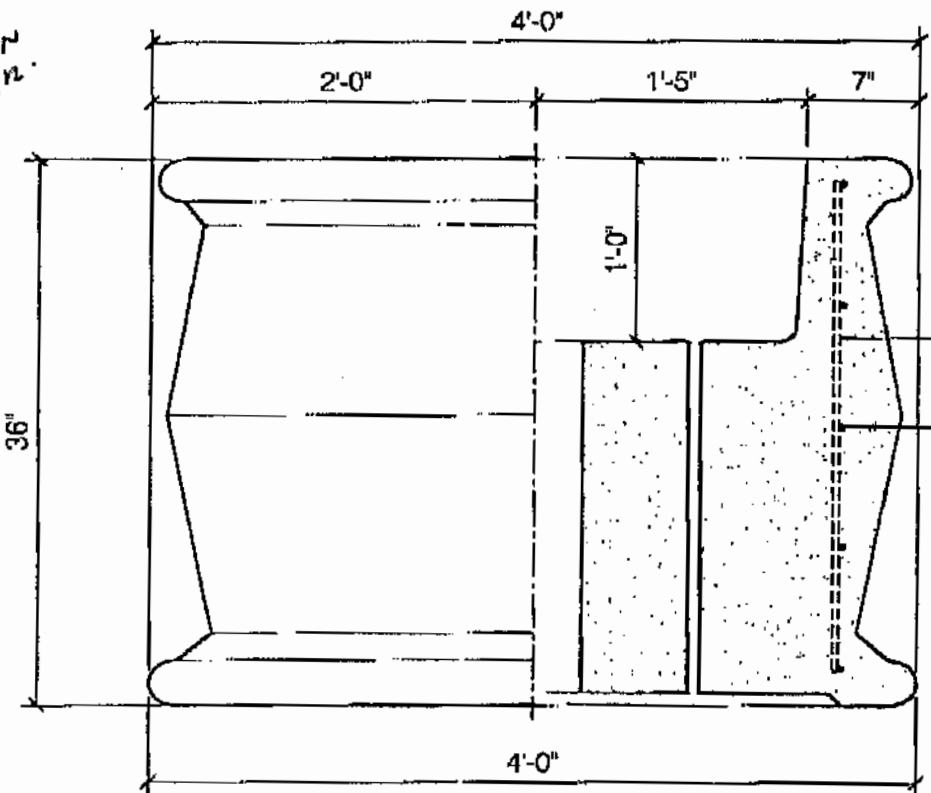
02-04-05

APPROVED BY *Alan Turk*

DATE 2-9-05

(SEE NOTE REGARDING LIFTING EYES.)

NEED SOCKETS
FOR SCREW-IN
LIFTING EYES IN
EACH CORNER.



ELEVATION - SECTION

MENDOCINO CAST STONE PLANTER

MODEL # M-4MES-36

SCALE: 1" = 1'-0"

DRAWN BY: AV

MEDITERRANEAN

Sizes

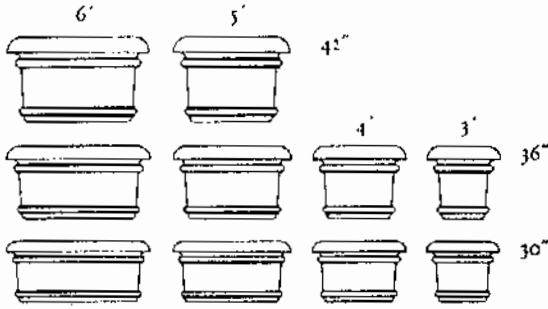
For rectangular sizes see page 10.



X
Round



Y
Square



Traditional

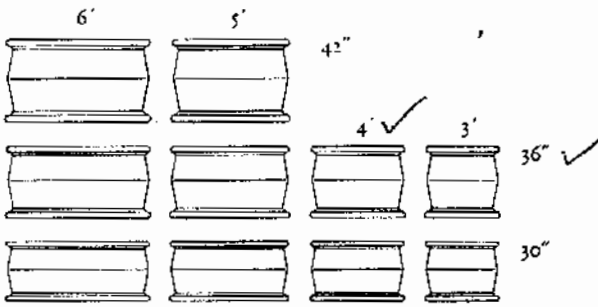


Monolithic



MES
Square

Sizes



Traditional

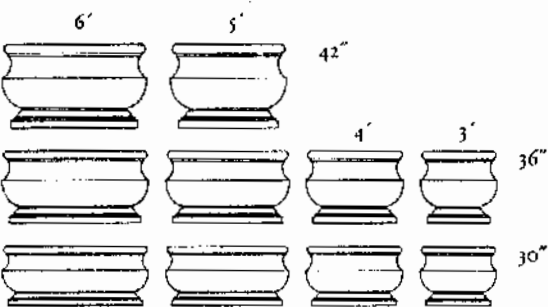


Monolithic



ME
Round

Sizes



Traditional



Monolithic

NAPOLÉON



NAS
Square

NA
Round

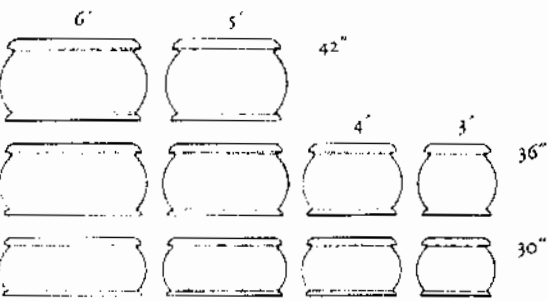
PEACHTREE



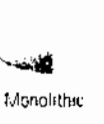
PES
Square

PE
Round

Sizes



Traditional



Monolithic

Scale: 1/8" = 1"